



Configuring EonNAS 3000 and 5000 as an iSCSI Storage Repository on Citrix XenServer

Application Note

Abstract

This application note describes how to configure Infortrend's EonNAS 3000 and 5000 systems as an iSCSI storage repository on Citrix XenServer.



Table of Contents

Product Models Covered by This Document.....	3
EonNAS Family of Unified Storage Systems.....	4
Configuring EonNAS as an iSCSI Storage Repository on Citrix XenServer	5
<i>Step 1: Creating an iSCSI target on EonNAS</i>	<i>5</i>
<i>Step 2: Configuring XenServer Settings.....</i>	<i>6</i>



Product Models Covered by This Document

This document applies to the following product models:

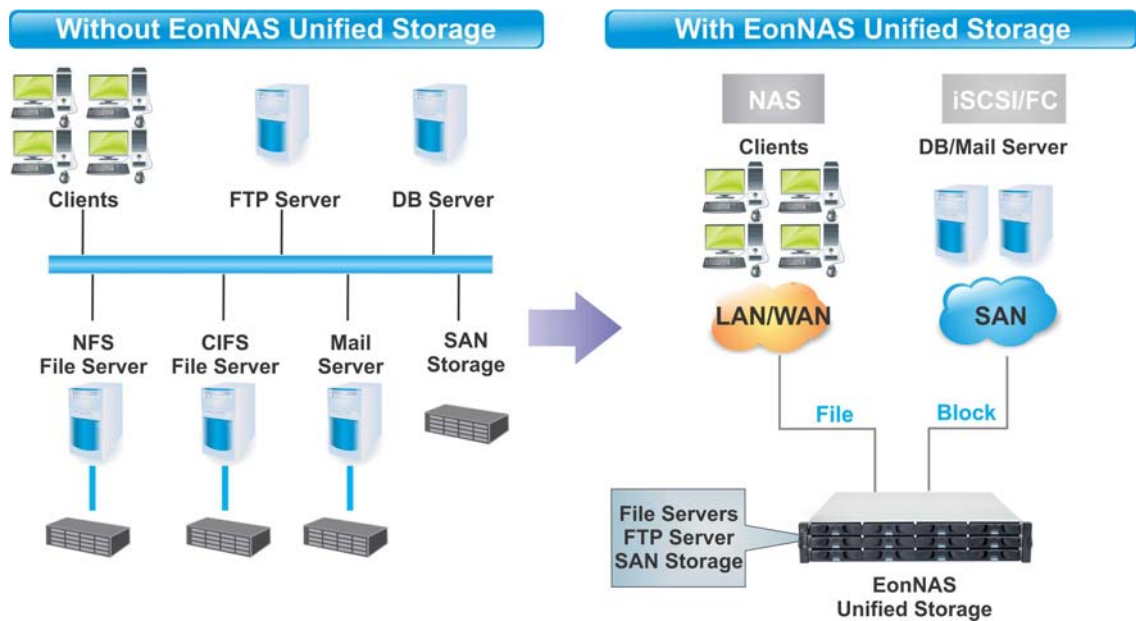
- **EonNAS 3210**
- **EonNAS 3220**
- **EonNAS 3230**
- **EonNAS 5120**

For more information regarding individual product models, please visit www.infortrend.com.

EonNAS Family of Unified Storage Systems

IT environments often feature multiple types of storage infrastructures to accommodate various types of data and achieve different service levels. The scattered boxes for DAS (Direct-Attached Storage), SAN (Storage Area Network) and NAS (Network-Attached Storage) configurations lead to poor utilization and complicated management.

Infortrend EonNAS simultaneously serves file and block-based applications with a unified storage platform, and features easy management, optimized resource utilization, high availability, flexible scalability and competitive price/performance. In addition, EonNAS offers a comprehensive set of advanced software features at no additional costs. EonNAS systems help businesses effectively meet diverse and changing data demand while staying within budget.



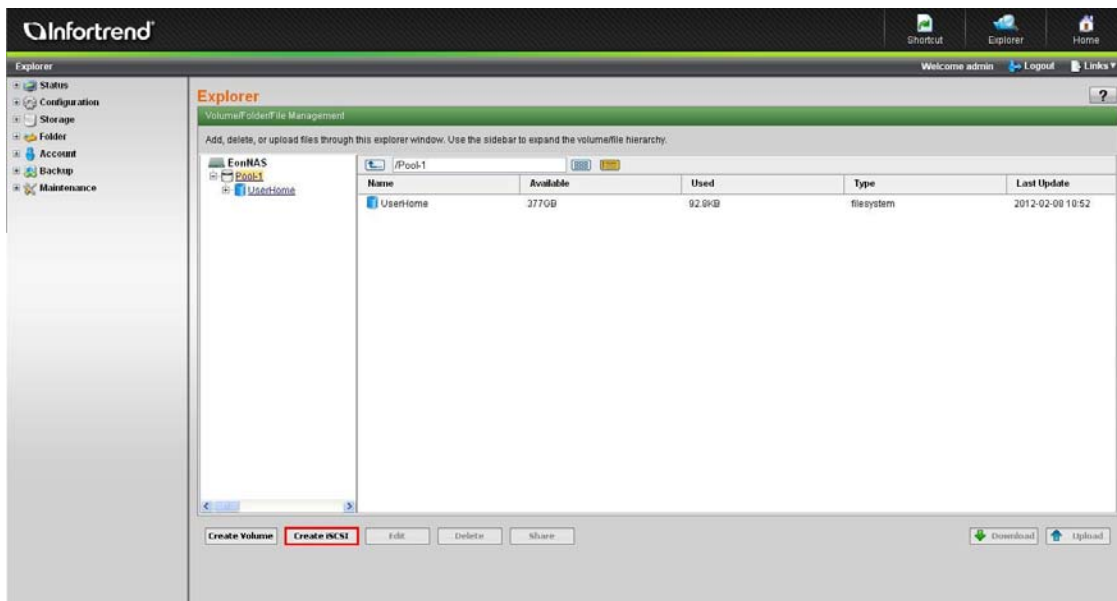


Configuring EonNAS as an iSCSI Storage Repository on Citrix XenServer

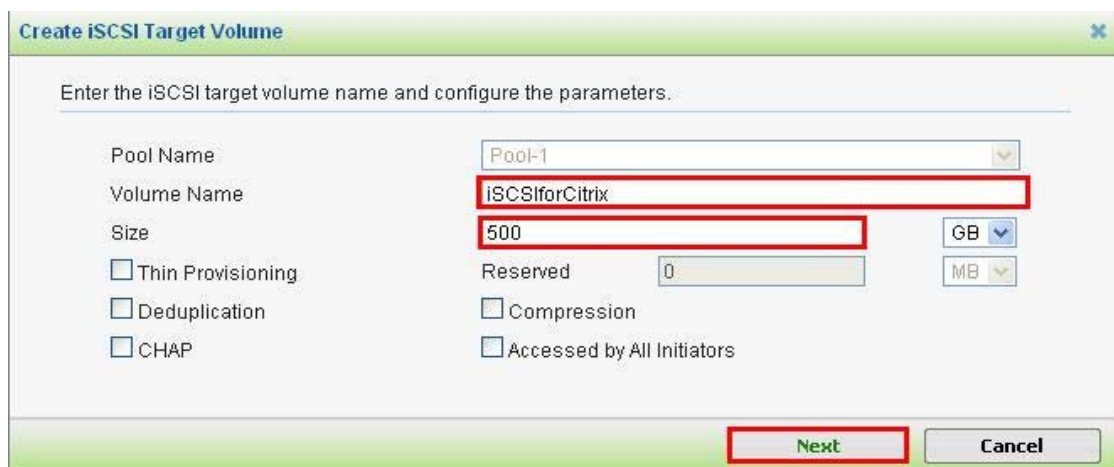
To configure EonNAS 3000 and 5000 systems as an iSCSI storage repository on Citrix XenServer, please follow the steps listed below:

Step 1: Creating an iSCSI target on EonNAS

To start the process, first an iSCSI target has to be added from the EonNAS system. To create an iSCSI target, go to *Explorer* in the EonNAS web-based UI. Click the *Create iSCSI* button.



In the new window that appears, enter the iSCSI target volume name, choose a size and make other necessary configurations if needed. After completing the settings, click *Next*.

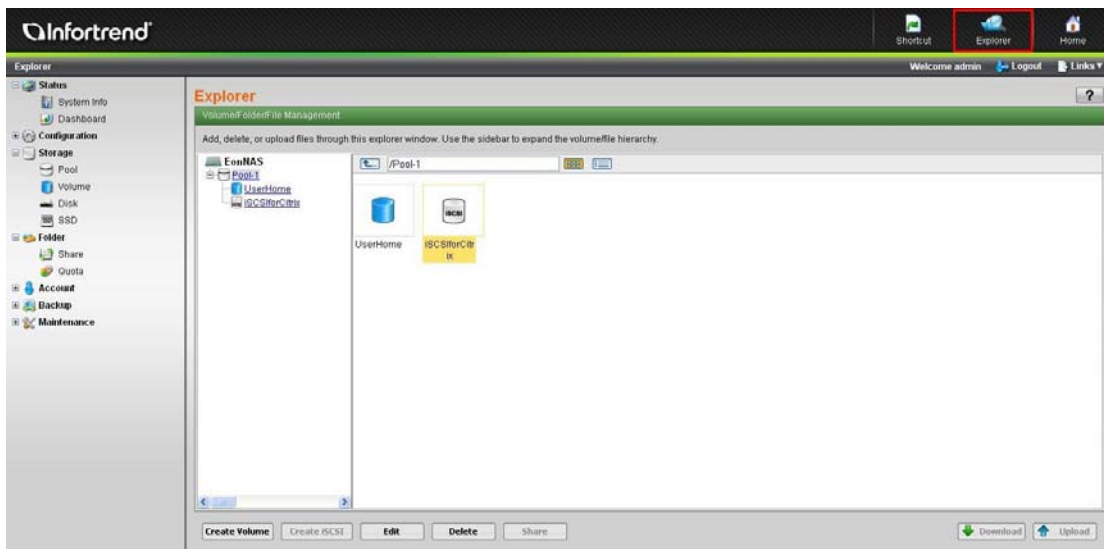


Configuring the iSCSI target parameters:

- **Volume Name:** Specifies the volume name. The name cannot include white spaces.

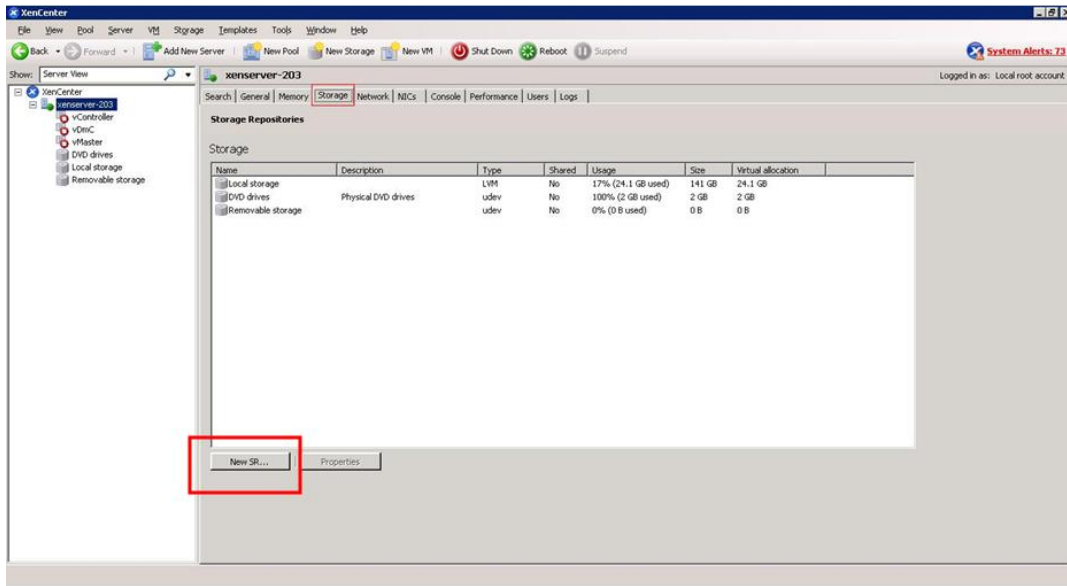
- **Size:** Caps the maximum disk capacity allocated for the volume. The default minimum amount (0 GB) actually means “unlimited size”.
- **Thin Provisioning/Reserved:** Allows the system to allocate actual storage capacity as needed. The thin-provisioned size determines the theoretical capacity. The reserved size determines the physical capacity available at the beginning. Make sure that the reserved size does not exceed the hypothetical (thin-provisioned) size.
- **Deduplication:** Reduces the amount of data by eliminating identical copies of data. One set of original data will be saved along with references to other copies.
- **Compression:** Reduces the size of the volume by compressing the data using LZJB, a lossless data compression algorithm.
- **CHAP/Accessed by All Initiators:** If you want to add password protection, check CHAP Access and enter the username (CHAP name) and password (CHAP secret) of your choice. Select *Accessed by All Initiators* if password protection is not required.

After the iSCSI target creation has been completed, you can check its status in *Explorer*.

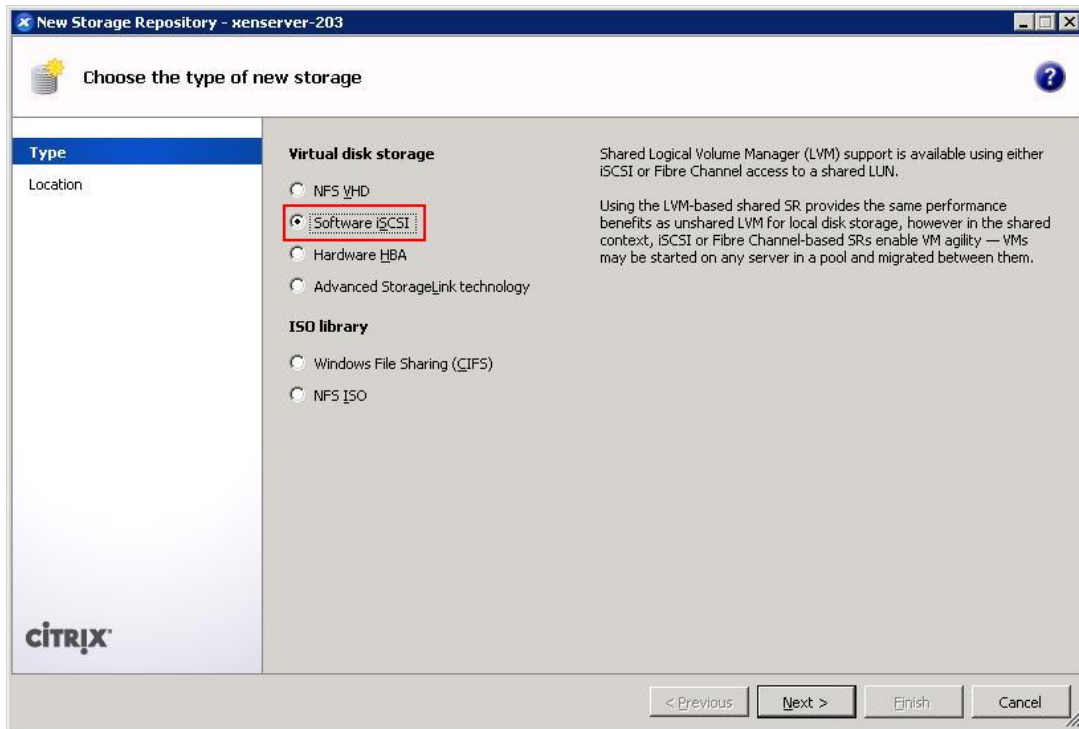


Step 2: Configuring XenServer Settings

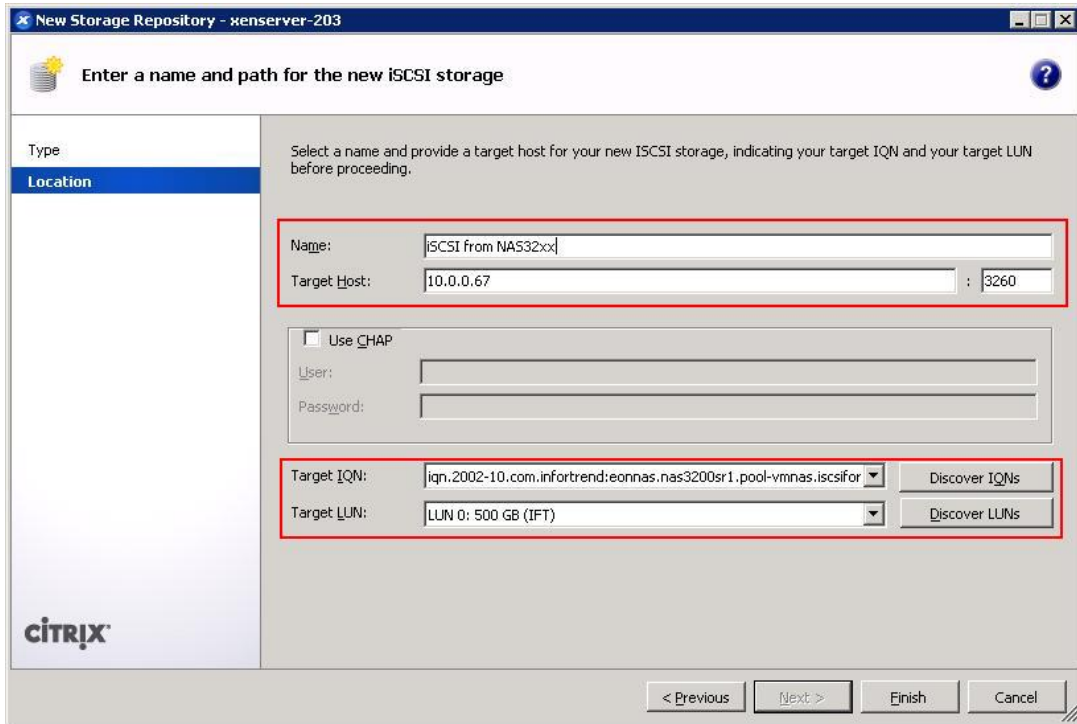
After creating the iSCSI target, go to *XenServer > Storage* in Citrix XenCenter and click *New SR* at the bottom of the screen.



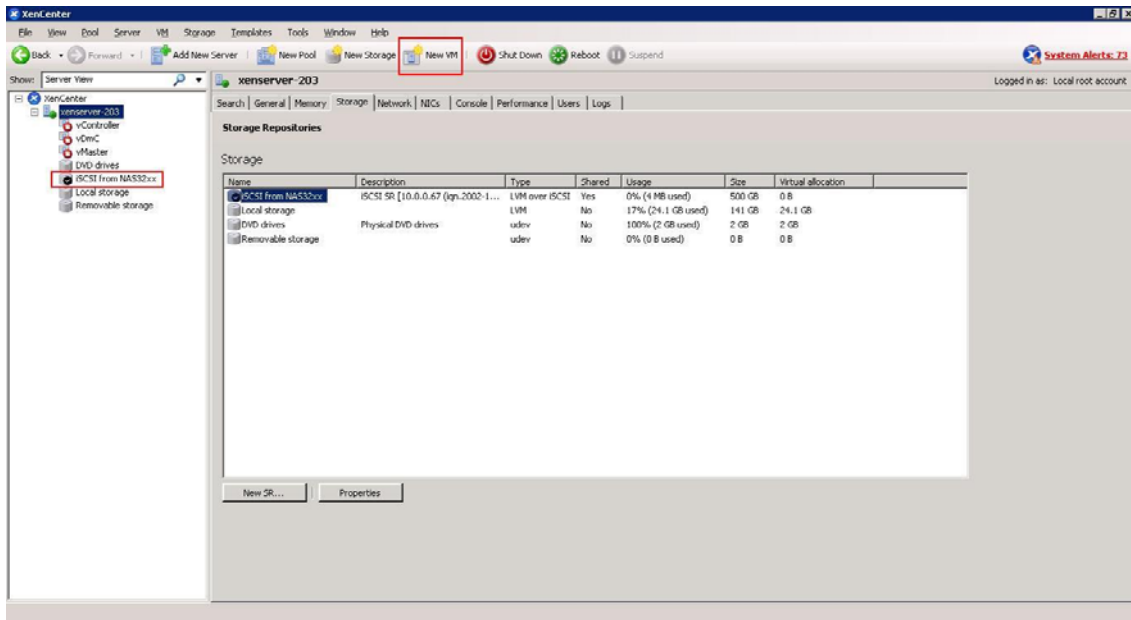
In the next screen, you are asked to choose the type of the new storage. Select *Software iSCSI* and click *Next*.



Add the *Name* and *Target Host IP* of the new storage. Click on *Discover IQNs* and *Discover LUNs*; the system will automatically locate and list the IQNs and LUNs.



After these settings are completed, a new VM can be added. To do so, select the iSCSI repository in the left-side column of the Citrix XenCenter UI and select *New VM* in the upper menu bar.



Select the virtual disks and click *Next* to complete the process.

