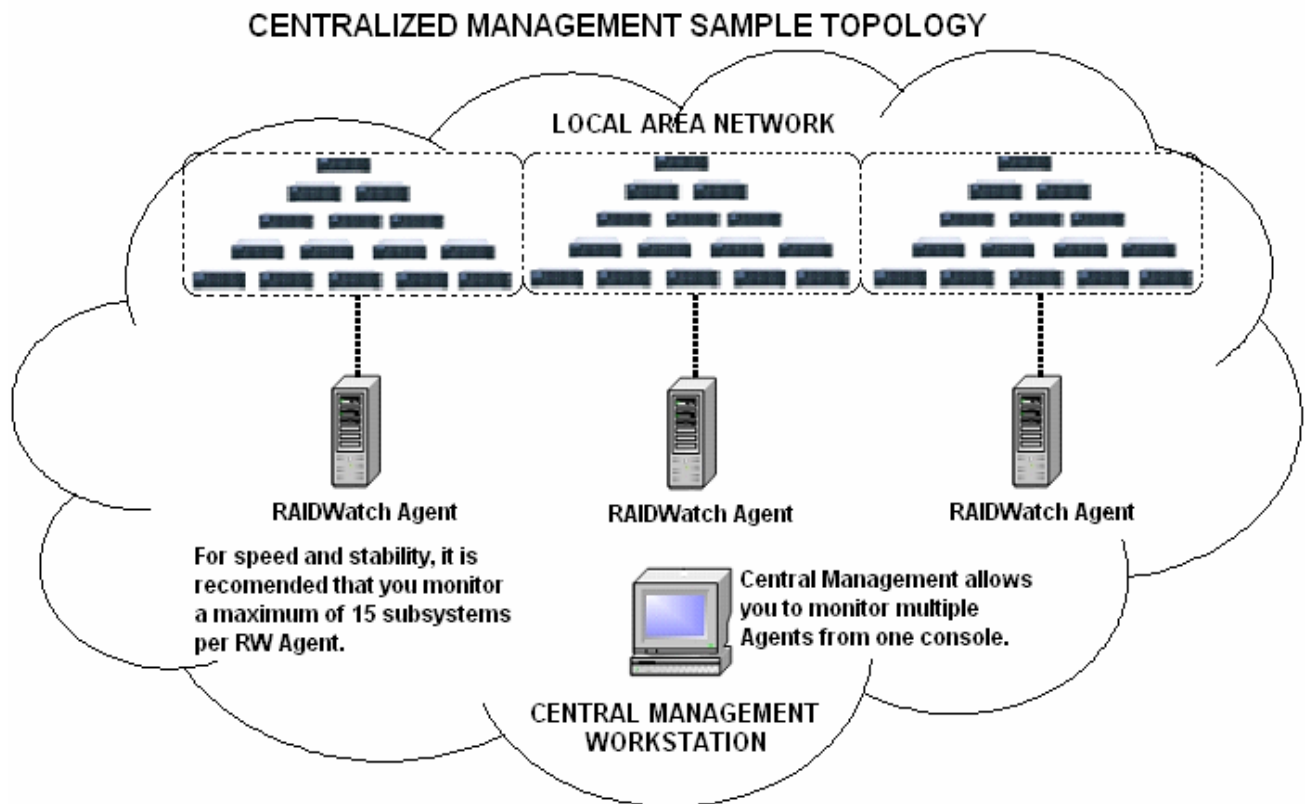


Number: AN006  
 Date: 2 February 2006  
 Subject: RAIDWatch v2.3 Centralized Management

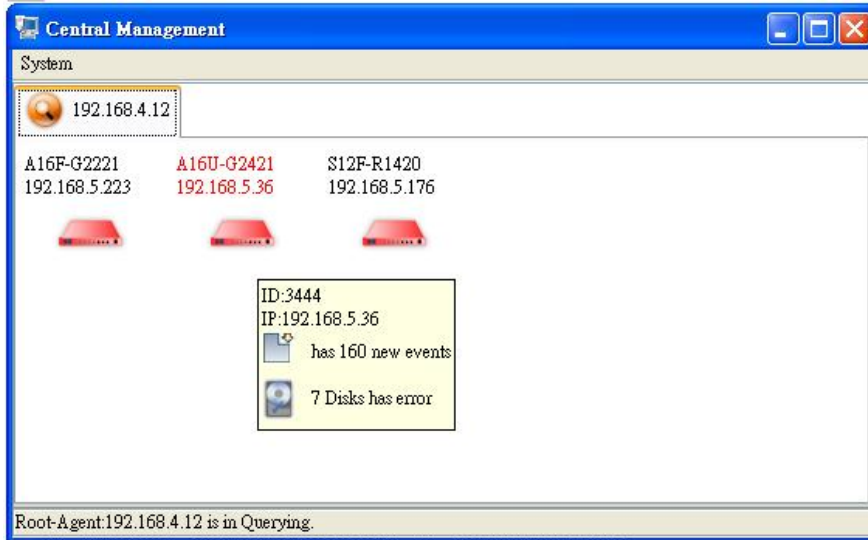
**Objective:** To provide an overview of the features and benefits of the Centralized Management interface in RAIDWatch version 2.3

Centralized Management monitors multiple RAID systems throughout the infrastructure via Inband or Out-of-band. All RAID systems appear in one window, making it easy to manage multiple systems.

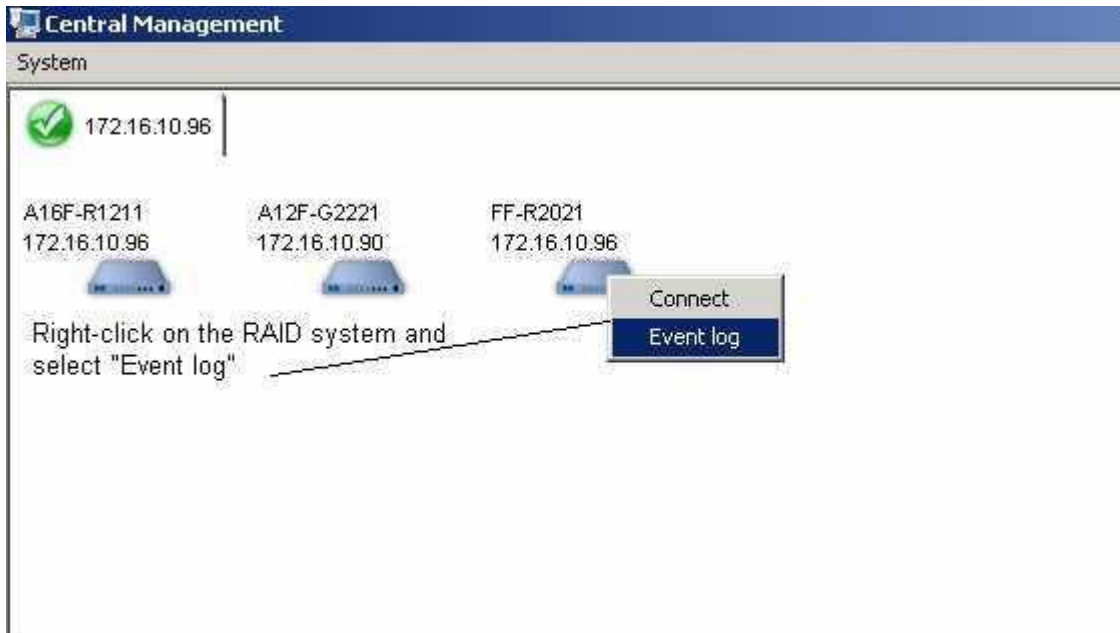
- **Multiple RootAgents are Managed from One Window**



- **On-screen Error and Event Notification**
  - Immediately see important RAID system information
  - Flashing red lights mean events or errors need attention



- **Instant Event Logs**
  - A couple of mouse-clicks produce a detailed event log of overall system health/activities
  - Event logs can be exported to a text file for further analysis



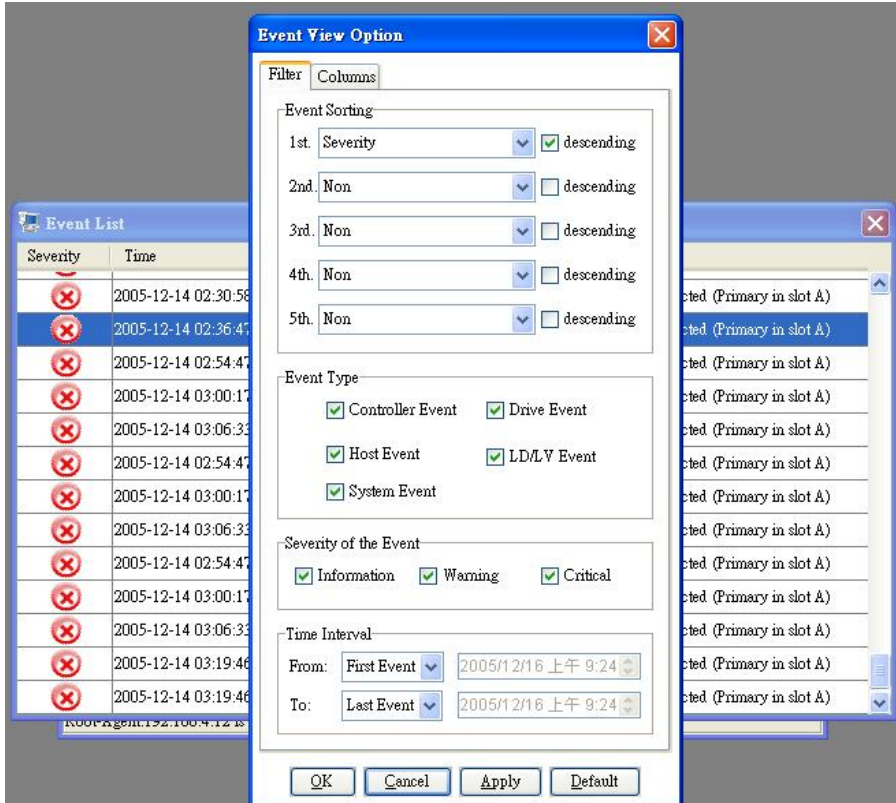
### View of the Event Log

Index	Severity	Type	Time	Description
1			2004-08-02 04:35:11	Controller Initialization Completed (Primary in slot A)
2			2004-08-02 04:35:11	Controller BBU is Charging ! (Primary in slot A)
3			2004-08-02 04:35:12	Controller Initialization Completed (Primary in slot A)
4			2004-08-02 04:35:09	Controller BBU is Charging ! (Secondary in slot B)
5			2004-08-02 04:35:32	Force Controller Write-Through on Trigger Cause (Primary in slot A)
6			2004-08-02 07:37:07	NOTICE: Controller BBU Fully Charged ! (Secondary in slot B)
7			2004-08-02 07:45:12	NOTICE: Controller BBU Fully Charged ! (Primary in slot A)
8			2004-08-02 07:45:18	Controller Default Write Policy Restore (Primary in slot A)

### Exporting Event Log to a Text File

Index	Severity	Type	Time	Description
44			2005-12-14 02:54:47	Peripheral Set 0 Device ALERT: Cooling fan1 Failure Detected
45			2005-12-14 02:59:07	Peripheral Set 0 Device NOTICE: Cooling fan1 Back On-Line
46			2005-12-14 03:00:17	Peripheral Set 0 Device ALERT: Cooling fan1 Failure Detected
47			2005-12-14 03:04:22	Peripheral Set 0 Device NOTICE: Cooling fan1 Back On-Line
48			2005-12-14 03:06:33	Peripheral Set 0 Device ALERT: Cooling fan1 Failure Detected
49			2005-12-14 03:18:18	Peripheral Set 0 Device NOTICE: Cooling fan1 Back On-Line
50			2005-12-14 03:19:46	Peripheral Set 0 Device ALERT: Cooling fan1 Failure Detected
51			2005-12-14 03:21:48	Peripheral Set 0 Device NOTICE: Cooling fan1 Back On-Line
49			2005-12-14 03:18:18	Peripheral Set 0 Device NOTICE: Cooling fan1 Back On-Line
50			2005-12-14 03:19:46	Peripheral Set 0 Device ALERT: Cooling fan1 Failure Detected
51			2005-12-14 03:21:48	Peripheral Set 0 Device NOTICE: Cooling fan1 Back On-Line
49			2005-12-14 03:18:18	Peripheral Set 0 Device NOTICE: Cooling fan1 Back On-Line
50			2005-12-14 03:19:46	Peripheral Set 0 Device ALERT: Cooling fan1 Failure Detected

- **Event Filtering Function**
  - Provides adjustable filtering options to meet the user's requirements



As demonstrated, Centralized Management is a powerful, yet easy to use interface that complements Infortrend RAIDWatch software.